

TCSD WATER COURSE

On the Templeton Community Services District's website there is a section entitled "TCSD Water Conservation". On this webpage there is a link to a free online water conservation course for all individuals with a Templeton water bill. This course covers techniques to lower water use. Completing the course will help you to conserve water and may allow you to get lowered water rates or have a notice of violation waived. The class can be completed on your own schedule in about one hour.

GENERAL WATER USE

Whenever you are using water, try to think of ways to limit how much you use. Use only the minimal amount of water needed for the task. Some ways to do this include limiting the length of showers, turning off sink faucets while lathering soap when washing hands or scrubbing dishes, and turning off the hose when not actively using it while washing your car. Additionally, make sure to always fully shut off faucets and hoses when finished with them to avoid leaks.



OTHER BROCHURES IN THIS SERIES

Appliances for Individuals

Commercial Appliances

Outdoor Improvements

Program Information



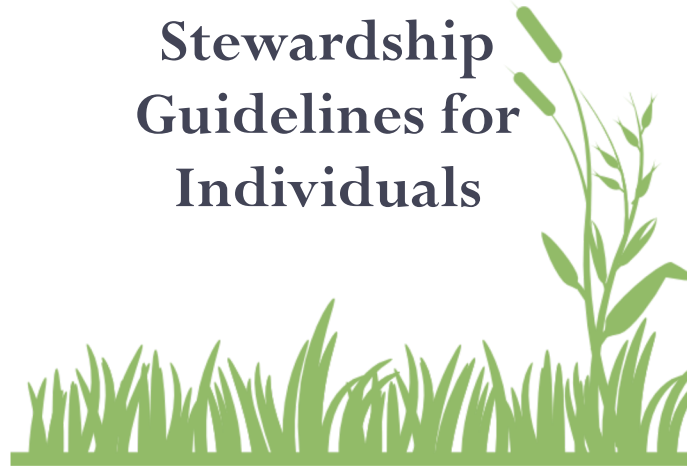
Upper Salinas-Las Tablas
Resource Conservation District
65 S Main St., Ste. 107
Templeton, CA 93426

Phone: (805) 434-0396
us-ltrcd.org

TOAD CREEK WATERSHED STEWARDS



**Stewardship
Guidelines for
Individuals**



PET ETIQUETTE

The county of San Luis Obispo has a great pamphlet outlining the importance of collecting your dog's waste. Uncollected waste can wash into storm drains and flow into our lakes, streams, and the ocean without any treatment. Picking up and properly disposing of dog waste is safer for our health and for the health of our waterways.



Advertising for the county campaign

PROPER DISPOSAL OF MEDICINES

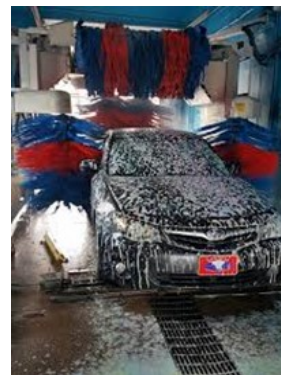
Dumping excess medicines into the toilet or down the sink causes them to enter waterways. This pollutes our water and harms aquatic life. Additionally, many medicines are difficult and expensive to filter out. San Luis Obispo County's Integrated Waste Management Authority's free medicine disposal program allows you to safely dispose of unused medicines. Many pharmacies distribute free, pre-addressed envelopes to return unused medicines, or they may have a kiosk for safe disposal.

CAR MAINTENANCE

Leaking motor oil or coolant can be washed into storm drains and transported into rivers and the ocean, polluting our water. Both oil and coolant are toxic to wildlife, plants, and humans. To avoid this, it is important to regularly maintain your car and quickly fix any leaks. When doing engine work, put down a drip pan to catch any leaks, and never dispose of engine fluids down storm drains, on the ground, or in ditches.

CAR WASHING

Washing your car at home uses 60 percent more water than a commercial car wash. Many car washes reuse wash water, lessening the amount of pollution and fresh water. If you choose to wash your car at home, use biodegradable, phosphate-free soaps and position the car in an area that absorbs water, such as a lawn. Minimize water usage by using a hose with a flow restrictor, and dump empty wash buckets into the sink or toilet, rather than the storm drain.



Commercial car washes use 60 percent less water

FERTILIZER APPLICATION

If possible, avoid fertilizing your lawn or try to use organic fertilizers. If you do have grass on your lawn that you fertilize, fertilize it properly. Follow the directions from fertilizer manufacturers and avoid using excess. Only apply fertilizers during the growing season, and if possible use slow-release fertilizers. Overuse of fertilizers can lead to excess nutrients in our waterways, causing algal blooms that deplete oxygen and kill aquatic life within rivers and oceans.

STORM DRAIN MAINTENANCE

Storm drains move water from streets directly to rivers and streams. Ensuring these drains are clear, allows them to work properly; removing water from streets, avoiding flooding, and keeping trash out of water ways. Never dump anything down storm drains and keep them clear of trash to keep pollutants out of waterways. If you see a clogged storm drain, report it to the Templeton Community Services District to alert them of the need for maintenance.



Example of a no dumping sign on a storm drain